

ELECTRIC FORKLIFTS

7-Series PLUS, 1.6 to 3.5 ton capacity

 Europe



ONE TOUG ANIM

► OUR MISSION

We empower operators to accomplish more, while working in the toughest conditions and tightest situations. When our customers have the will, we provide the way.

INTRODUCTION



► BOBCAT'S HISTORY

In 1958, Melroe Manufacturing Company introduced a compact front-end loader that evolved quickly into the M400, the world's first true skid steer loader. The company soon adopted what became the world-famous 'Bobcat' brand – and its success paved the way for the global compact equipment industry we know today.

► YEARS OF EXPERIENCE

In 2021, Bobcat expanded its portfolio by acquiring Doosan Industrial Vehicle. This specialist in material handling equipment constructed its first forklift in 1968 and went on to establish a global presence with 400 dealers in 93 countries.



► BOBCAT TODAY

Bobcat is expanding its portfolio with the addition of forklifts and reach trucks for the material handling industry. Offering a comprehensive line-up that meets all your intra-logistics needs. Bobcat forklifts and reach trucks are produced in our factory in Korea, while our premium quality warehouse equipment is made in Germany.



7-Series PLUS Forklifts **3**

TOUGH, AGILE & SAFE

► READY TO GIVE YOUR BUSINESS A LIFT

Offering dual traction motors, power steering, and regenerative braking, our forklifts are designed to optimize performance. And their enhanced cooling, water resistance, and lower noise levels provide all-day comfort and dependability.

Reduced noise at ear level to protect the operator's hearing

Make the operator compartment your own by choosing your preferred control convenience (fingertip or levers)



Excellent visibility through the mast enables you to work with more efficiency and safety
P. 7

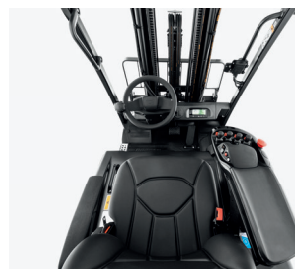
Durable frame and mast guarantee safer operation when carrying loads



► OUTSTANDING PRODUCTIVITY

Experience outstanding driving performance with a small turning radius, high visibility, and a well-designed and powerful motor system - which ultimately enhances productivity.

P. 6-7



► ALL-DAY COMFORT

Enjoy the ergonomically designed adjustable steering and seats with optional fingertip control. Noise reduction has also been incorporated for the highest level of operator comfort.

P. 8-9



► SAFETY IN EVERY MOVE

This series comes equipped with Hill Start Assist, EPB, EFB, and mast sway control. These features prevent potential hazards, providing a secure and safe work environment.

P. 10-11



► MAXIMUM UPTIME

The robust components ensure durability and reliability. All primary components are easily accessible, making maintenance simple and efficient.

P. 12-13



OUTSTANDING PRODUCTIVITY



► EXCELLENT VISIBILITY

Thanks to the precisely designed overhead guard with angled roof bars and the excellent visibility through the mast, you have the best view on the task at hand and accomplish more every day.



► POWERFUL TRACTION AND PUMP MOTOR SYSTEM

Improve your performance and productivity with the help of a powerful pump motor system, which provides high traction and torque.



► EASY SIDE BATTERY REMOVAL

The battery changing system enables fast and easy battery exchange using Side Roll-In/Out or Side Lift In/Out methods. This allows for multi-shift operations to be conducted efficiently.



► OPTIMIZED STEERING ANGLE

Enjoy working in places where others cannot because the space is so limited. Thanks to the small turning radius, you can maneuver in and out of the tightest spots easily.

COMFORT & CONTROLS



► PREMIUM ADJUSTABLE SEAT

Thanks to the adjustable suspension seat, our forklifts provide exceptional comfort even during long shifts. For additional convenience, you can equip your seat with a heating system to keep operators warm in colder environments.



► ADJUSTABLE COLUMN

The ergonomic steering wheel column features step-less adjustment to let operators position it exactly where they need to.



► INTUITIVE INSTRUMENT PANEL

Control the truck's performance settings on the go with the simple touch of a button.



► CONVENIENCE TRAY

For maximum convenience, a large cup holder, USB port, 12 V power outlet, clipboard holder, and more are placed comfortably within your reach.

► ANTI-SLIP STEP & ENTRY BAR



The anti-slip step provides comfortable and safe mounting and dismounting of the vehicle for additional peace of mind.

► WELL-PLACED HANDLES



Thanks to the well-placed entry bar and handles, stepping in and out of your vehicle is as quick and comfortable as it gets.

► EMERGENCY SWITCH



The emergency switch is always within your reach, ready to be pressed easily in case of emergency.



SAFETY IN EVERY MOVE

▶ ADVANCED PROTECTION FOR YOU AND YOUR OPERATION

Bobcat forklifts have safety embedded in their DNA. Packed with tons of features that protect your health and your investment, these machines give you peace of mind in every task, every day.

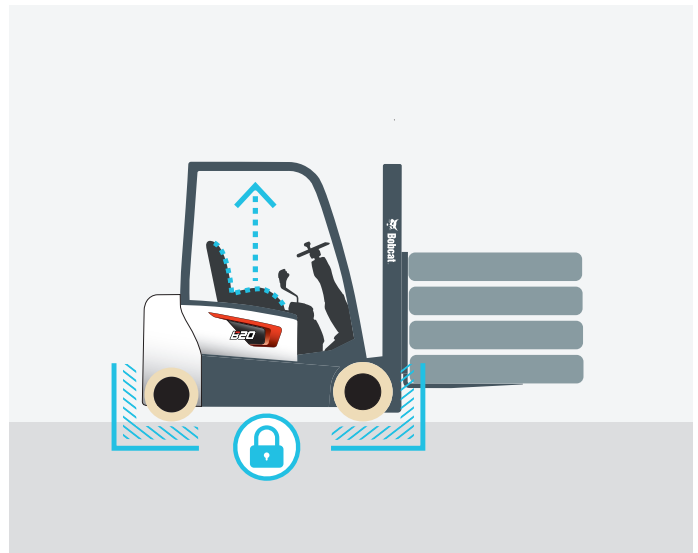
▶ HILL START ASSIST

Regardless of the position of the vehicle, the Hill Start Assist keeps the machine stationary unless movement is initiated by the operator.



▶ ELECTRIC PARKING BRAKE (EPB)

The parking brake is designed to engage automatically, without the need for a physical switch. This feature enhances safety by ensuring that the vehicle remains stationary when the operator exits the seat.



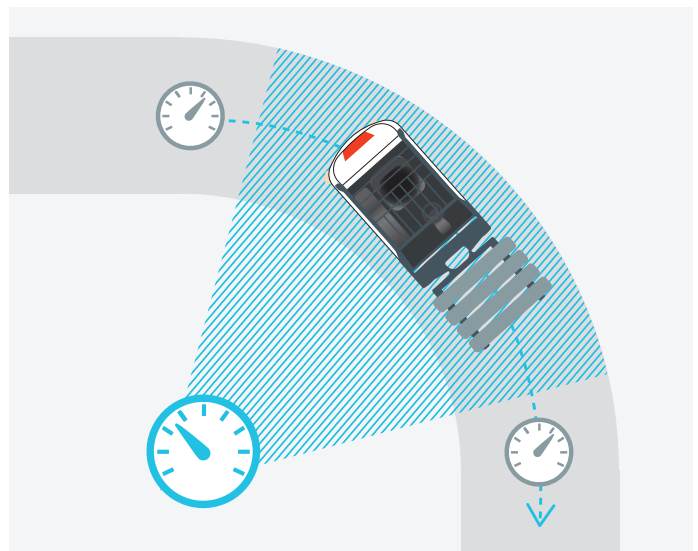
▶ MAST LOWERING INTERLOCK & TILT LOCK

When the operator leaves the truck unattended, the hydraulic locking system prevents unintentional lowering and tilting of the mast. This keeps the truck, load, and work array safe.



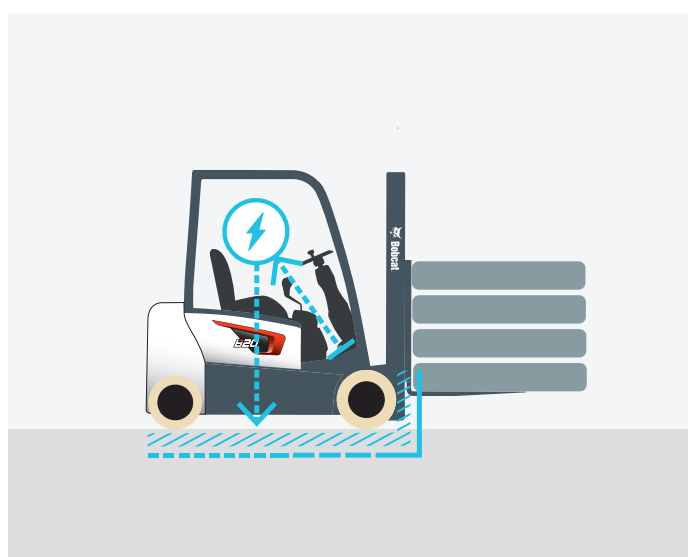
▶ DRIVE SPEED CONTROL

Depending on how high the forklift needs to lift, its travel and lift speeds are adjusted automatically for additional safety.



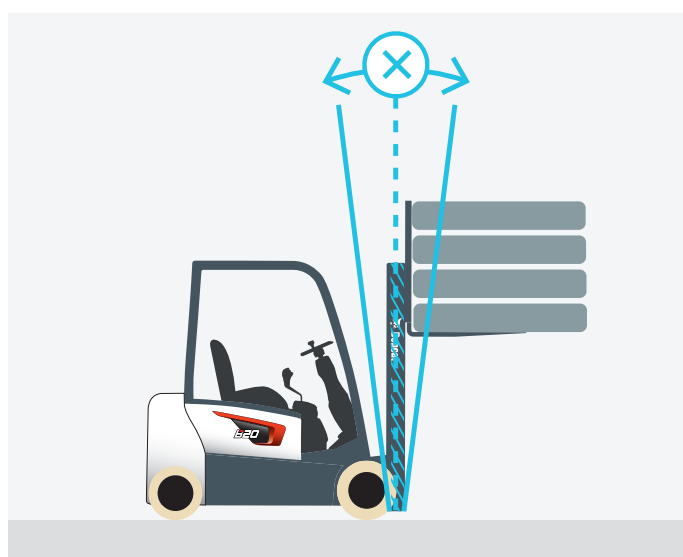
► ELECTRIC FOOT BRAKE SYSTEM (EFB)

This advanced braking technology is designed to activate when the operator releases pressure from the accelerator pedal. Furthermore, this innovation has been expanded to include the service brake system.



► MAST SWAY CONTROL

The updated design enhances forklift safety by reducing mast oscillation during operation at maximum height. With control of drive speed proportional to the mast height, the vehicle's maximum speed is automatically reduced by 50% at maximum height. The Guardian Stability System is included as standard.



► LARGE PANORAMIC MIRROR

Providing great visibility of the rear working area, the large panoramic mirror improves safety and adds to your overall productivity at the same time.



► RED FENCE LIGHTS

The vehicle projects red light-lines onto the ground, marking a safe area for pedestrians in close proximity to the vehicle.



BUILT TO LAST

► EXCELLENT RELIABILITY

Bobcat 7-series PLUS electric forklifts are built tough to provide maximum uptime and dependability thanks to a reliable AC controller, dust & water-resistant parts, and an additional drive motor cover.



**THERE'S NO TIME
FOR DOWNTIME.
STAND UP TO EVERY TASK
THAT COMES YOUR WAY.
DAY AFTER DAY.**

2 YEAR WARRANTY

► WARRANTY

Bobcat develops every machine to the highest standards of quality and durability. That's why our standard warranty provides 24 months or 2 000 operating hours (whichever occurs first) of coverage.



► PROTECTION PLUS EXTENDED WARRANTY

Enjoy total peace of mind with Protection Plus extended warranty. Providing the same level of protection as the standard warranty, Protection Plus also reflects different customer needs and expectations by offering a choice of durations and annual operating hours.

► EXTENSIVE DEALER NETWORK

You can rely on our network of dealers and service partners who are always ready to help you.

► BOBCAT GENUINE PARTS

Quality components delivered to our dealers guarantee that all of our equipment is built to last, withstand the toughest conditions and provide reliable performance.

SPECIFICATIONS

TECHNICAL DATA ACCORDING TO VDI 2198										
		B15T-7 PLUS	B18T-7 PLUS	B20T-7 PLUS	B16X-7 PLUS	B18X-7 PLUS	B20X-7 PLUS	B25X-7 PLUS	B30X-7 PLUS	B35X-7 PLUS
CLASSIFICATION		3-WHEEL ELECTRIC			4-WHEEL ELECTRIC					
Drive		AC Electric								
Load Capacity/rated load (kg)	Q	1 500	1 750	2 000	1 600	1 800	2 000	2 500	3 000	3 500
Load Center (mm)	c	500								
Load Distance, center of drive axle to fork (mm)	x	376		381	376		381	448	454	
Wheelbase (mm)	y	1 323	1 423	1 446	1 495			1 589	1 734	1 750
Service Weight (with min. weight of battery) (kg)		3 028	3 142	3 472	3 189	3 281	3 461	4 623	5 068	5 486
Tread Front (mm)	b11	902		912	902	912		998		
Tread Rear (mm)	b12	167		201	890			998		
Tilt of Mast/Fork carriage Forward/Backward (°)	α/β	5/7						6/9		
Height, Mast lowered (1) (mm)	h1	1 850 – 2 645						1 885 – 3 135		
Free Lift (1) (mm)	h2	130 – 2 060		135 – 2 060	130 – 2 060		135 – 2 060	147 – 2 120	152 – 1 940	152 – 1 760
Lift Height (1) (mm)	h3	2 700–7 020						2 950 – 8 250	2 950 – 6 010	2 720 – 5 655
Height of Overhead Guard (mm)	h6	2 010						2 185	2 210	
Height of Seat (mm)	h7	919						1 070		
Overall Length (mm)	l1	2 791	2 891	2 929	3 020		3 025	3 379	3 530	3 614
Length to Forkface (mm)	l2	1 891	1 991	2 029	2 120		2 125	2 329	2 480	2 564
Overall Width (mm)	b1/b2	1 090		1 119	1 090	1 119		1 245		
Fork carriage ISO 2328 class		II							III	
Ground Clearance loaded below mast (mm)	m1	86						130		
Ground Clearance center of wheelbase (mm)	m2	100						140		
Aisle width for pallets 1 000 × 1 200 crossways (mm)	Ast	3 216	3 316	3 354	3 466		3 471	3 620	3 772	3 832
Aisle width for pallets 800 × 1 200 lengthways (mm)	Ast	3 341	3 441	3 479	3 662		3 667	3 799	3 950	4 010
External Turning Radius (mm)	Wa	1 515	1 615	1 648	1 886			1 950	2 095	2 155
Travel Speed, loaded/unloaded (km/h)		17/17						16/18		
Lift Speed, loaded/unloaded (mm/s)		400/600						480/600	420/600	380/600
Lowering Speed, loaded/unloaded (mm/s)		500/450						490/460		500/460
Max. Drawbar pull, loaded (N)		12 749						17 338		
Max. Gradeability, loaded (%)		26	25	24	26	25	24	25	22	20
Battery voltage, nominal capacity K5 (V/Ah)		48/440	48/510	48/585			80/500		80/600	

Specification values quoted in this specification sheet have been rounded. Performance may vary depending on operating conditions.

Products and specifications are subject to improvement and change without prior notice.

(1) Mast dimensions refer to a range from the lowest to highest available mast.

Note: Load capacities are based on the standard chassis without side shifter.

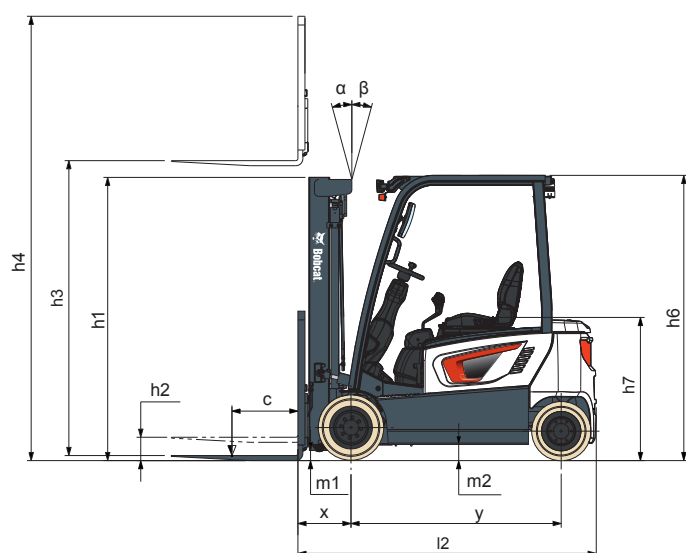
STANDARD EQUIPMENT & OPTIONS

STANDARD EQUIPMENT & OPTIONS	
SAFETY & STABILITY	
Easy entry grab bar	✓
Electro-magnetic automatic parking brake (EPB)	✓
Electric foot brake system (EFB)	✓
Mast sway & drive speed control	✓
LED lights	✓
Emergency stop switch	•
Auto tilt leveling	•
Fence light	•
Panoramic mirror	•
GUARDIAN STABILITY SYSTEM (GSS)	
OSS (Operator Sensing System)	✓
Neutral position for start	✓
Hill start assist	✓
Curve control speed	✓
Low battery warning alarm	✓
Seat belt indicator	✓
Mast lowering interlock & tilt lock (ISO 3691)	✓
Decrease of travel speed (up to 50%) when the mast is raised above the primary stage	✓
Forward tilt is reduced by 2° when the mast is raised above the primary stage	•
Alarm sounds when the mast is raised above the primary stage with the mast tilted more than 2°	•
PRODUCTIVITY	
Full AC system chassis	✓
Rounded design counterweight	✓
86° (BX) / 90° (BT) Steering angle	✓
Hydraulic cushioned valve in freelifit cylinder (FFL & FFT)	✓
Battery lift/roll in and out system	•
Cooling options : Fans & Fin type controller	•

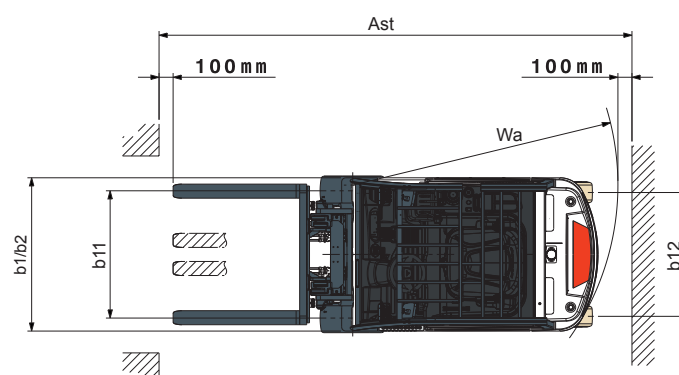
*This list is based on factory data. Standard or optional can vary for specific countries.

STANDARD EQUIPMENT & OPTIONS	
ERGONOMICS	
Large entry step with anti-slip pattern	✓
Large & angled floor plate (leg room) with rubber cushion	✓
Rounded design battery hood cover	✓
Easy to read instrument panel	✓
Adjustable tilt steering column & easy grip (Ø 280 size) steering wheel	✓
Hydraulic control lever with direction switch	✓
Large cup holder, USB port & 12 V electric jack, clip board	✓
Additional accessory bar	✓
Reduced noise level	✓
Fingertip	•
Rear grab bar with horn	•
Newly improved adjustable seats	•
Special height overhead guards	•
Mono pedal	•
Modular cabs	•
RELIABILITY	
Robust frame structure & strong structure overhead guard	✓
IP65 Rated Curtis controller	✓
IP43 Rated PAL enclosed type motors	✓
Improved cooling performance	✓
Controller cover	•
Belly plate	•
SERVICEABILITY	
Easy to access controller & motors	✓
Wide open battery hood cover	✓
Durable heat-resistant (38"SQ) cables	✓
Tool-less side cover with air ventilation	✓
Easy View	✓

• = option
✓ = standard
– = not available



Note: This dimensional drawing only applies to the 4 wheels series.



FINANCING OPTIONS

24, 36, OR 48 MONTH FINANCING*

Take advantage of 24, 36 or 48 month financing programs starting from **0% interest** and improve your cashflow. Ask your dealer for the financing offers available.

145 MACHINES / 46 PRODUCT FAMILIES / 1 TOUGH ANIMAL



**SKID-STEER
LOADERS**



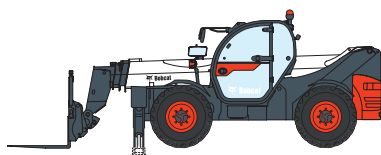
**COMPACT TRACK
LOADERS**



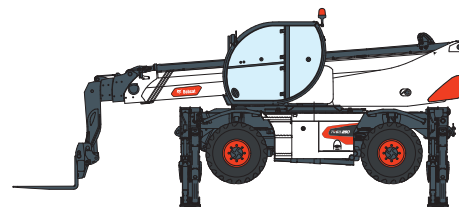
**COMPACT WHEEL
LOADERS**



FORKLIFTS



TELEHANDLERS



ROTARY TELEHANDLERS



**LIGHT COMPACTION
EQUIPMENT**



**COMPACT
EXCAVATORS**



**COMPACT
TRACTORS**



**SMALL ARTICULATED
LOADERS**



**MINI TRACK
LOADER**



MOWERS



ATTACHMENTS

DOOSAN

Bobcat is a Doosan Company. Doosan is a global leader in construction equipment, power & water solutions, engines, and engineering proudly serving customers and communities for more than a century. | Bobcat and the Bobcat logo are registered trademarks of Bobcat Company in the United States and various other countries. ©2023 Bobcat Company. All Rights Reserved.

www.bobcat.com

©2023 BOBCAT B4502491-EN (08-23)



Bobcat®

*Financing options may vary by country and dealer. Always ask your dealer about currently available financing options. Terms and conditions may apply.

Doosan Bobcat EMEA, U Kodetky 1810, 263 12 Dobříš, Czech Republic