



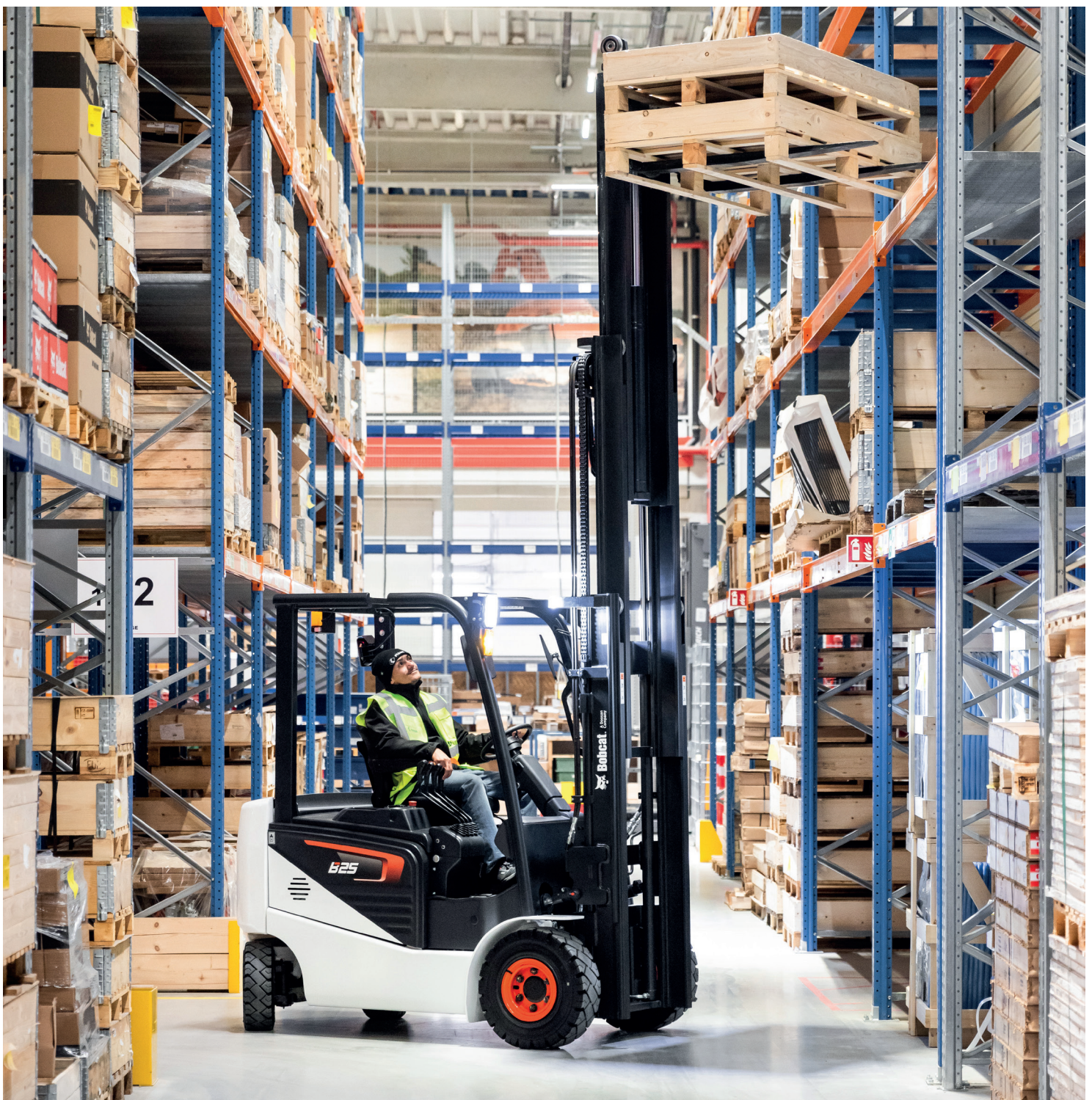
**Bobcat®**

*One Tough Animal®*

# ELECTRIC FORKLIFTS

NXE Series 2.5 to 3.5 ton capacity

🌐 EMEA



# ONE TOUGH ANIM

---

## ► OUR MISSION

We empower operators to accomplish more while working in the toughest conditions and tightest situations. When our customers have the will, we provide the way.



# INTRODUCTION

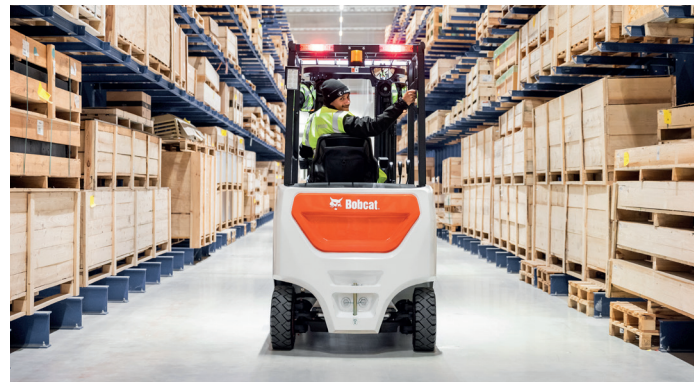


## ► BOBCAT'S HISTORY

In 1958, Melroe Manufacturing Company introduced a compact front-end loader that evolved quickly into the M400, the world's first true skid steer loader. The company soon adopted what became the world-famous 'Bobcat' brand – and its success paved the way for the global compact equipment industry we know today.

## ► YEARS OF EXPERIENCE

In 2021, Bobcat expanded its portfolio by acquiring Doosan Industrial Vehicle. This specialist in material handling equipment constructed its first forklift in 1968 and went on to establish a global presence with 400 dealers in 93 countries.



## ► BOBCAT TODAY

Bobcat is expanding its portfolio with the addition of forklifts and reach trucks for the material handling industry, offering a comprehensive lineup that will meet all your intralogistics needs. Bobcat forklifts and reach trucks are produced in our factory in South Korea, while our premium quality warehouse equipment is made in Germany.



NXE-Series Electric Forklifts 3

# TOUGH, AGILE & SAFE

## ► BUILT FOR THE EXTREME

Keep your operations running smoothly with the reliable B25NS from Bobcat's NXE Series forklifts, built for consistent all-day performance. Features like the electric foot brake system and safeguards such as IP67-rated controllers and sealed contactors enhance dependability and ensure long-lasting protection for your investment. Consider additional enhancements like a belly plate for extra motor protection or specialized hydraulic oil, allowing short-duration forklift use in cold temperatures (down to -20 °C).



Spacious operator compartment with adjustable steering column and ample legroom

Excellent visibility through the mast for safer and more efficient operations  
**P. 7**

Hydraulic cushion function to slow down lowering speed and reduce impact

Customizable operator compartment with preferred control convenience (fingertip or levers)



## ► EFFICIENCY MAXIMIZED

Boost productivity with the B25NS NXE Series truck, featuring an AC controller, superb residual capacity, cold storage hydraulic oil and an auto-tilt leveling system.

**P. 6-7**



## ► COMFORT IN ACTION

Work long shifts with ease with the added comforts of temperature control, compact steering wheel, and premium seating.

**P. 8-9**





### ► SAFETY COMES STANDARD

Work with confidence thanks to the extensive lineup of safety features including anti-roll-back, NFC start tag, automatic speed control, and more.

**P. 10–11**



### ► RUGGED RELIABILITY

Experience a synergy of power, performance, and functionality with features like IP54-rated dust and water protection, an AC Curtis controller, and Tilt cylinder boots.

**P. 12–13**







# OUTSTANDING PRODUCTIVITY



## ► RELIABLE AC CONTROLLER

Make every load and lift more efficient with our reliable and powerful AC Curtis controller (48/80 V) and single drive motor.



## ► EXCELLENT VISIBILITY

Confidently work faster and more efficiently on any job site thanks to unparalleled visibility. The overhead guard with angled roof bars offers a clear upward view without compromising strength or safety, while neatly arranged hydraulic hoses reduce clutter.



## ► KEEP PRODUCTIVITY HIGH

With an IP54-rated drive motor and an IP67-rated controller, your truck is shielded from dust and moisture. Enhance its capabilities by using our cold storage hydraulic oil, enabling your forklift to withstand temperatures as low as -20 °C for short durations.



## ► SUPERB RESIDUAL CAPACITY

Our forklifts boast increased stability, thanks to a low-profile battery and smart design featuring an H-type axle that lowers the center of gravity. So, your forklift maintains high residual capacity, even at heights exceeding 4 meters.



# COMFORT & CONTROLS



## ► SPACIOUS CAB

Enjoy increased cab space thanks to the compact steering wheel. This not only eases maneuverability in tight spaces and enhances response time but it also allows for more precise load handling. Plus, it reduces operator fatigue and boosts training efficiency for new operators.



## ► MORE LEG ROOM

Our operator compartment provides ample leg room to minimize strain, enhance focus, and create a more relaxed work atmosphere for the operator.



## ► EFFORTLESS CONTROL

Operators can seamlessly control the forklift's performance with the user-friendly full color display, offering a wide range of adjustments and settings. The display also provides other alerts and language preferences for a more comfortable and user-friendly experience.



## ► ADDED CONVENIENCE

For maximum convenience, enjoy a large cup holder, 5 V USB port, and clipboard holder, comfortably placed within your reach.

## ► EASY ACCESS



The low anti-slip step and floor plate keep you safe and sound when hopping on and off.

## ► YEAR-ROUND COMFORT



Experience optimal comfort in any weather with our modular cab, equipped with features such as a heater or operator fan.

## ► CUSTOMIZED CONTROL



Have it your way with your preferred option for directional and operational control—be it levers or fingertip controls, mono-pedal, or directional switch.







# SAFETY IN EVERY MOVE

## ▶ ADVANCED PROTECTION FOR YOU AND YOUR OPERATION

Bobcat forklifts have safety embedded in their DNA. Packed with tons of features that protect your well-being and your investment, these machines give you peace of mind in every task, every day.

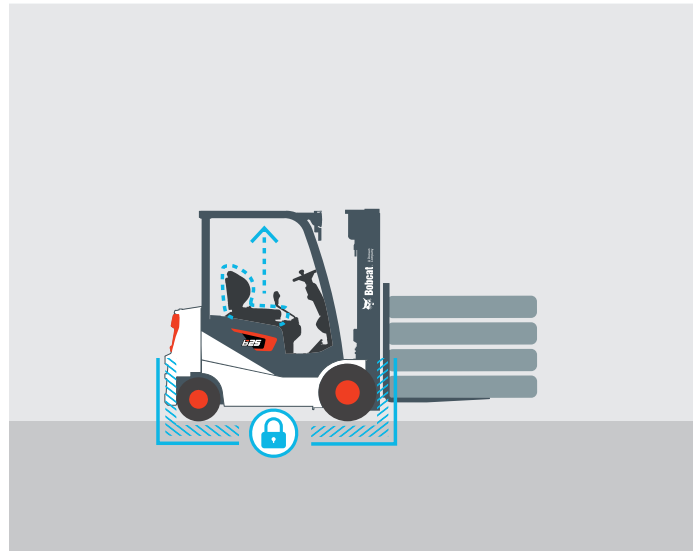
### ▶ ANTI-ROLL-BACK

The anti-roll-back feature prevents the forklift from rolling back for 5 seconds when the truck is stopped.



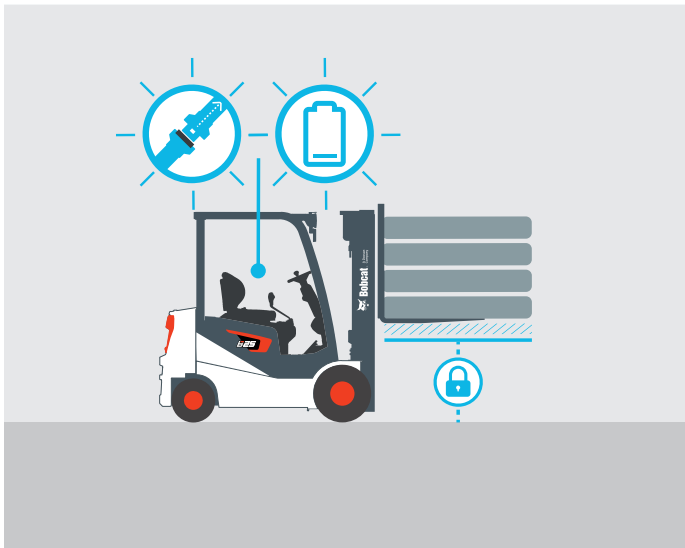
### ▶ ELECTRIC PARKING BRAKE (EPB)

The parking brake is designed to engage automatically, without the need for a physical switch. This feature enhances safety by ensuring that the vehicle remains stationary when the operator exits the seat.



### ▶ GUARDIAN STABILITY SYSTEM (GSS)

GSS offers a comprehensive suite of essential features, including a secure start neutral position, low battery warning, and indicators for brake oil and seat belts. Our system adheres to ISO 3691 standards, covering mast lowering and tilt interlock, along with the Operator Sensing System (OSS).



### ▶ UNLIMITED RAMP HOLD

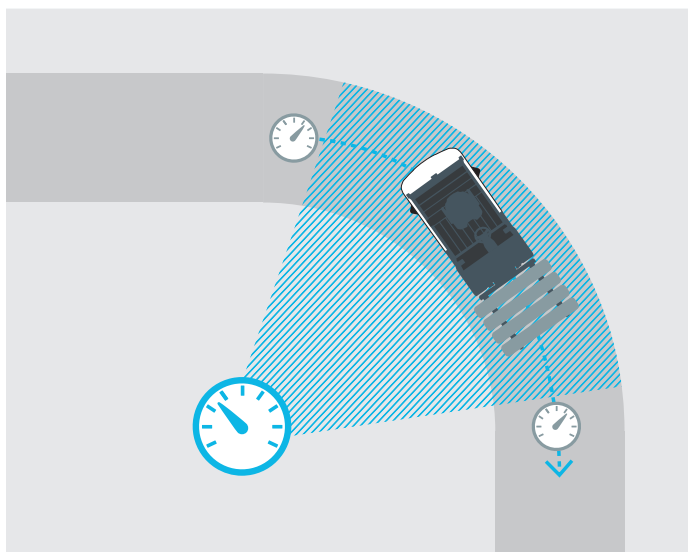
Benefit from a combination of anti-roll-back and EPB technologies. The swift 5-second anti-roll-back mechanism and automatic EPB activation after 3 seconds of stopping ensure continuous prevention of roll-back for heightened safety and control.





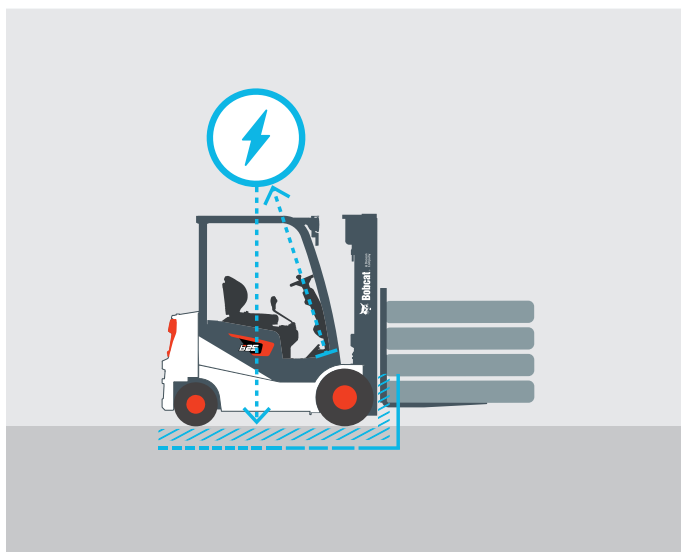
### ► AUTOMATIC SPEED CONTROL

The automatic speed control manages travel speeds when turning sharply and automatically slows the truck down when cornering to reduce the risk of accidents or damage.



### ► ELECTRIC FOOT BRAKE SYSTEM (EFB)

This advanced braking technology activates when the operator releases pressure from the accelerator pedal. This also includes the service brake system.



### ► NFC START TAG

By replacing keys with a secure badge, you contribute to a safer work environment by ensuring only authorized personnel can initiate the forklift. This reduces the risk of unauthorized use and enhances overall safety protocols.



### ► RED FENCE LIGHTS

The vehicle projects red light-lines onto the ground, marking a safe area for pedestrians in close proximity to the vehicle.



# BUILT TO LAST

## ► DESIGNED TO ENDURE

The B25NS NXE Series is engineered to minimize damage, decrease downtime, boost safety, and enhance operator comfort. We provide Cold Storage Hydraulic Oil, which is effective in environments as cold as -20 °C, ensuring optimal operational efficiency for your intralogistics business.





**THERE'S NO TIME  
FOR DOWNTIME.  
STAND UP TO EVERY TASK  
THAT COMES YOUR WAY,  
DAY AFTER DAY.**

## **2 YEAR** **WARRANTY**

### **WARRANTY**

Bobcat develops every machine to the highest standards of quality and durability. That's why our standard warranty provides 24 months or 2 000 operating hours (whichever occurs first) of coverage.



### **PROTECTION PLUS EXTENDED WARRANTY**

Enjoy total peace of mind with the Protection Plus Extended Warranty. Offering the same level of protection as our standard warranty, Protection Plus also addresses various customer needs and expectations by providing options for different durations and annual operating hours.

### **EXTENSIVE DEALER NETWORK**

You can rely on our network of dealers and service partners who are always ready to help you.

### **BOBCAT GENUINE PARTS**

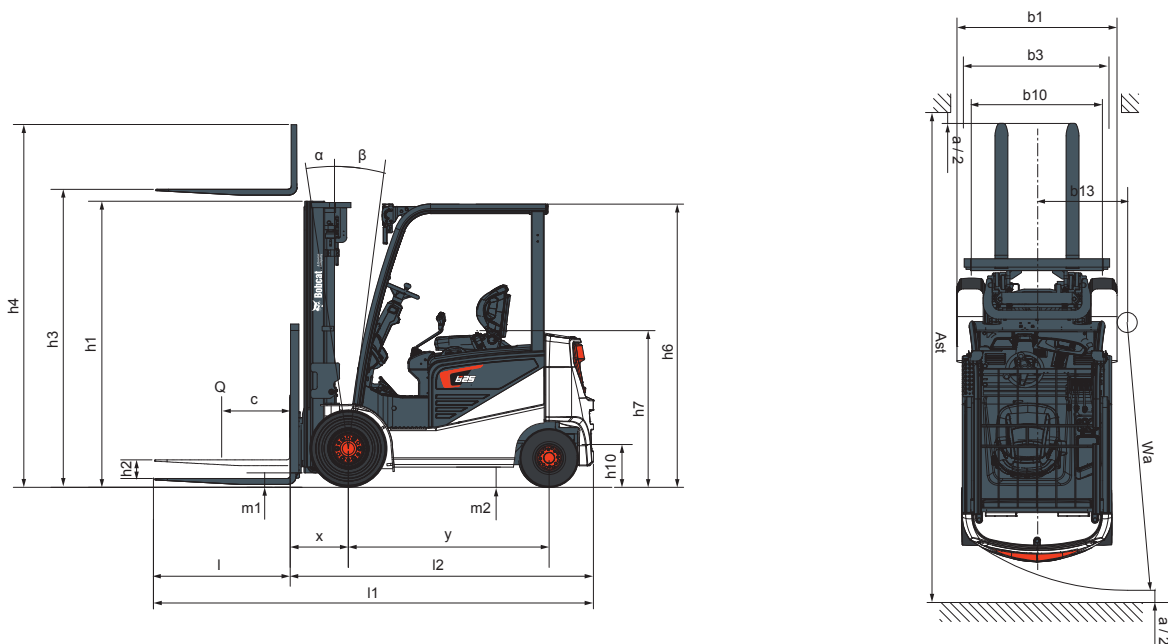
We provide our dealers with high-quality components to ensure our equipment stays reliable and consistently delivers dependable performance even in the toughest conditions.



# MAIN SPECIFICATIONS

## TECHNICAL DATA ACCORDING TO VDI 2198

		B25NS	B30NS	B35NS
CHARACTERISTICS				
Drive		Electric		
Load capacity / rated load (kg)	Q	2 500	3 000	3 500
Load center distance (mm)	c	500		
Load distance, centre of drive axle to fork (mm)	x	457		462
Wheelbase (mm)	y	1 560	1 710	
Service weight (with min. weight of battery) (kg)		4 150	4 360	5 230
Tread width, front (mm)	b10	1 019	1 014	
Tread width, rear (mm)	b11	995		
Tilt of mast / fork carriage forward (α) / backward (β) (deg)	α / β	6 / 10		
Height, mast lowered (mm)	h1	1 880 – 3 095		
Free lift (mm)	h2	150 – 1 440		
Lift (with STD 2-stage mast) (mm)	h3	3 000 – 6 010		
Max. lift height (mm)	h4	4 247 – 7 249		4 252 – 7 254
Height to top of overhead guard (mm)	h6	2 180		
Seat height / stand height (mm)	h7	1 183		
Length to face of forks (mm)	l2	2 350	2 520	2 550
Overall width (mm)	b1	1 244		
Fork dimensions (mm)		45 × 100 × 1 050	45 × 122 × 1 050	50 × 122 × 1 050
Ground clearance, with load, below mast (mm)	m1	140		
Ground clearance, center of wheelbase (mm)	m2	125		
Aisle width for pallets 1 000 × 1 200 crossways (mm)	Ast	3 717	3 957	3 962
Aisle width for pallets 800 × 1 200 lengthways (mm)	Ast	3 917	4 157	4 162
Turning radius (mm)	Wa	2 060	2 300	
Travel speed, loaded / unloaded (km/h)		14 / 15		
Battery type		lead-acid		
Battery compartment L × W × H (mm)		570 × 1 028 × 755	710 × 1 028 × 745	
Battery voltage / nominal capacity K (V/Ah)		48 / 775	80 / 620	
Type of drive control unit		AC		
Working press for attachments (bar)		200		
Sound level at the driver's ear according to EN 12 053 (dB (A))		68		





# STANDARD EQUIPMENT & OPTIONS

STANDARD EQUIPMENT & OPTIONS	
PRODUCTIVITY	
Full AC system chassis	✓
High residual capacity	✓
Single drive motor	✓
Cold storage hydraulic oil	✓
Auto tilt leveling	•
SAFETY	
Seat belt interlock	✓
Electronic parking brake	✓
Front LED lights	✓
Anti-roll-back	✓
Combination LED lights	•
Blue safety front and/or rear LED light	•
Strobe light	•
Red fence (zone) light	•
Additional rear LED lights	•
Back-up alarm	•
Mast lift speed control	•
NFC start tag	•
Weight scale	•
Front steel mesh guard	•
Panoramic and/or rear-view mirrors	•
GUARDIAN STABILITY SYSTEM (GSS)	
Operating Sensing System (OSS)	✓
Neutral position for start	✓
Unlimited ramp hold	✓
Automatic speed control	✓
Low battery warning alarm	✓
Brake oil & seatbelt indicator	✓
Mast Lowering interlock & tilt lock	✓
Decrease of travel speed (up to 50%) when the mast is raised above the primary stage	•
Forward tilt reduced by 2° when the mast is raised above the primary stage	•
Alarm sounds when the mast is raised above the primary stage with the mast tilted more than 2°	•

STANDARD EQUIPMENT & OPTIONS	
ERGONOMICS	
Ergonomic operator compartment	✓
Large entry grab bar	✓
Adjustable steering column	✓
USB power socket	✓
Document clip	✓
Cup holder	✓
Storage box	✓
Compact steering wheel	✓
Full color LCD display	✓
Hydraulic control levers with F/R switch	✓
Large entry step with anti-slip pattern	✓
Mono pedal	•
Rear grab bar with horn	•
Premium suspension seat	•
Fingertip controls	•
Modular Cab – Type A, B, C, D	•
Heater	•
Operator fan	•
RELIABILITY	
IP67 Curtis controller	✓
IP54-rated drive motor	✓
Under cover (belly plate)	•
Rubber bellows for tilt cylinders	•
SERVICEABILITY	
Toolless side panel	✓
Hood locking cylinder	✓
Junction box	✓
Easy to access controller & motors	✓
Wide open battery hood cover	✓
Easyview (software to adjust parameters)	✓

\*This list is based on factory data.  
Standard or optional can vary for specific countries.

• = option    ✓ = standard    – = not available

Specification values quoted in this specification sheet have been rounded.  
Performance may vary depending on operating conditions.  
Products and specifications are subject to improvement and change without prior notice.  
(1) Mast dimensions with load backrest refer to a range from the lowest to highest available mast.

Note: Load capacities are based on the standard chassis without side shifter.



# FINANCING OPTIONS

## 24, 36, OR 48 MONTH FINANCING\*

Take advantage of 24, 36 or 48 month financing programs starting from **0% interest** and improve your cashflow. Ask your dealer for the financing offers available.

**340 MACHINES / 150 ATTACHMENT FAMILIES / 1 TOUGH ANIMAL**



**SKID-STEER  
LOADERS**



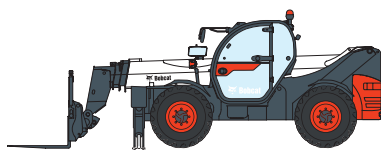
**COMPACT TRACK  
LOADERS**



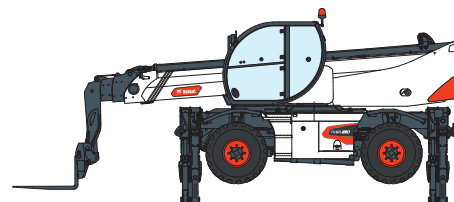
**COMPACT WHEEL  
LOADERS**



**FORKLIFTS**



**TELEHANDLERS**



**ROTARY TELEHANDLERS**



**LIGHT COMPACTION  
EQUIPMENT**



**COMPACT  
EXCAVATORS**



**COMPACT  
TRACTORS**



**SMALL ARTICULATED  
LOADERS**



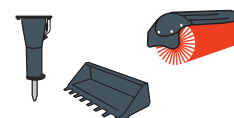
**MINI TRACK  
LOADER**



**MOWERS**



**PORTABLE  
POWER**



**ATTACHMENTS**

**DOOSAN**

**Bobcat is a Doosan Company.** Doosan is a global leader in construction equipment, power & water solutions, engines, and engineering proudly serving customers and communities for more than a century. | Bobcat and the Bobcat logo are registered trademarks of Bobcat Company in the United States and various other countries. ©2024 Bobcat Company. All Rights Reserved.

[www.bobcat.com](http://www.bobcat.com)

©2024 BOBCAT B4502680-EN (02-24)



**Bobcat®**

\*Financing options may vary by country and dealer. Always ask your dealer about currently available financing options. Terms and conditions may apply.

Doosan Bobcat EMEA, U Kodetky 1810, 263 12 Dobříš, Czech Republic