



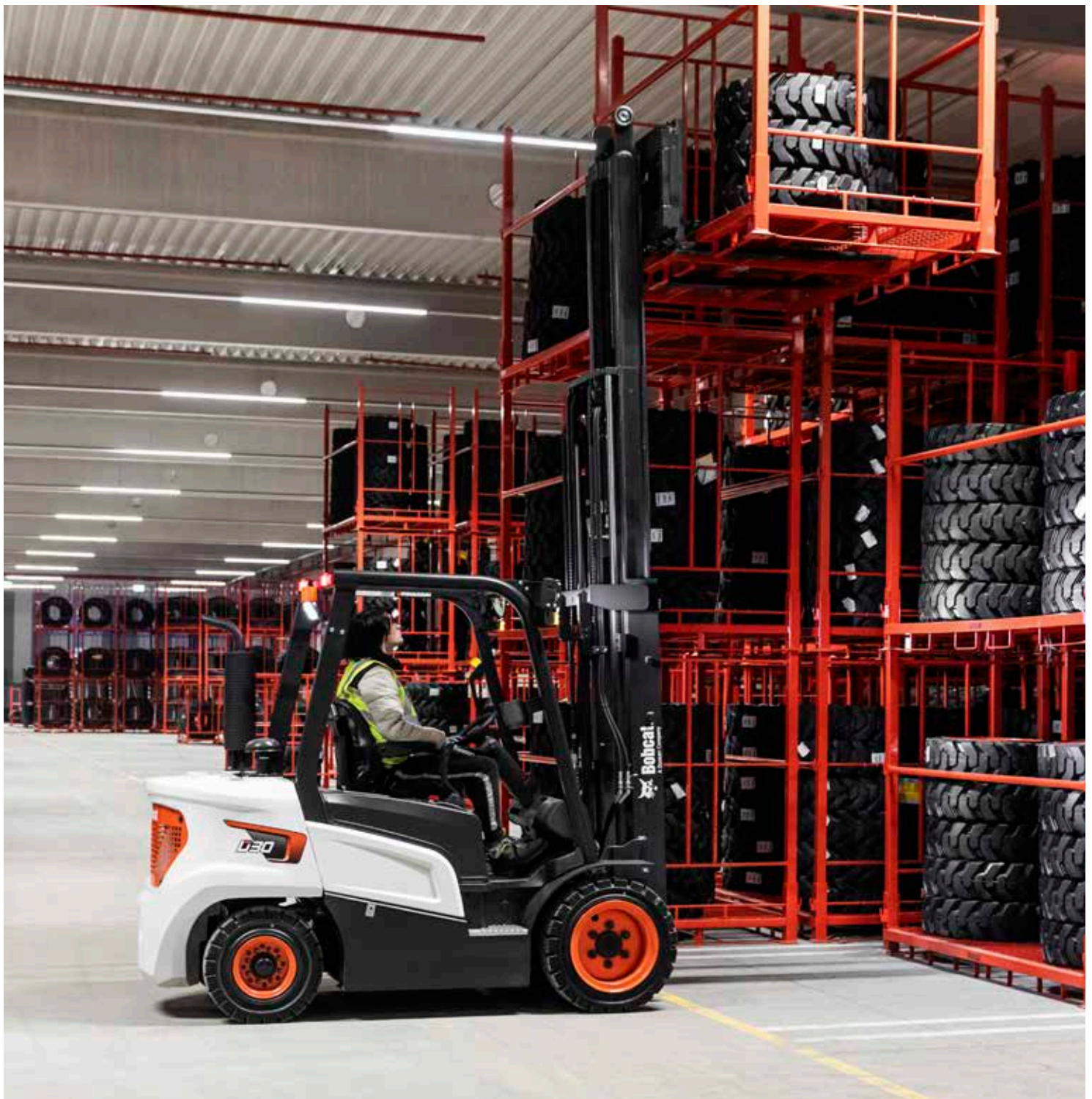
Bobcat®

One Tough Animal.

DIESEL FORKLIFTS

NXS-Series, 2.5 to 3.5 ton capacity

🌐 EMEA



ONE TOUGH ANIMAL

► OUR MISSION

We empower operators to accomplish more, while working in the toughest conditions and tightest situations. When our customers have the will, we provide the way.

INTRODUCTION

► BOBCAT'S HISTORY

In 1958, Melroe Manufacturing Company introduced a compact front-end loader that evolved quickly into the M400, the world's first true skid steer loader. The company soon adopted what became the world-famous 'Bobcat' brand – and its success paved the way for the global compact equipment industry we know today.



► YEARS OF EXPERIENCE

In 2021, Bobcat expanded its portfolio by acquiring Doosan Industrial Vehicle. This specialist in material handling equipment constructed its first forklift in 1968 and went on to establish a global presence with 400 dealers in 93 countries.



► BOBCAT TODAY

Bobcat is expanding its portfolio with the addition of forklifts and reach trucks for the material handling industry. Offering a comprehensive line-up that will meet all your intralogistics needs. Bobcat forklifts and reach trucks are produced in our factory in Korea, while our premium quality warehouse equipment is made in Germany.




TOUGH, AGILE & SAFE

► **READY TO GIVE YOUR BUSINESS A LIFT**


Boost your business with our NXS-Series forklifts, designed for optimal performance. Built around a high-performance, powerful, and efficient engine, it excels in driving, lifting, lowering, and gradeability. This machine is not only safe, but rugged, dependable, and easy to service, ensuring a low total cost of ownership.



► **ULTIMATE PRODUCTIVITY**
Maximize productivity with the NXS-Series. Its superior travel speed, lift speed, and gradeability outshine competitors. The high-torque engine at low RPM boosts acceleration, driving, and climbing performance. **P. 6-7**



► **ALL-DAY COMFORT**
Work through the shift in comfort and with less fatigue with many quality-of-life features as standard: ergonomic seat, color display, plenty of leg room, anti-slip plate, and more. **P. 8-9**



► **DRIVEN BY SAFETY**
Enjoy peace of mind provided by the machine's excellent all-around visibility, superb stability, and a full suite of smart sensors. **P. 10-11**



► **MAXIMUM UPTIME**
Cut costs with longer service intervals and high-quality Bobcat parts and consumables for long-lasting machine efficiency. **P. 12-13**

OUTSTANDING PRODUCTIVITY



▶ EXCELLENT VISIBILITY

Thanks to the precisely designed overhead guard with angled roof bars, and excellent visibility through the mast, you'll get the best view of the task at hand and accomplish more every day.



▶ POWERFUL DIESEL ENGINE

The high-performance yet efficient diesel engine with 45.6 kW of power and high torque at low RPM provides the best-in-class travel and lifting speeds. The available multi-torque model lets you tweak your machine performance to adapt to any job.



▶ ADJUSTED TO YOUR NEEDS

The VCU (Vehicle Control Unit) allows you to see all critical parameters at a glance – it also lets you adjust the speed limit and reverse lock speed limit on the fly, so you can get in total sync with your truck and do more.



▶ REACH NEW HEIGHTS

Experience superb climbing power with the combination of a powerful engine, a strong transaxle, and a sturdy frame structure. Elevate your expectations as the NXS-Series conquers steep slopes with an impressive gradeability of up to 25%*.

* (D30NXS, Gradeability @ 1.6 km/h, loaded)

COMFORT & CONTROLS



► **EASILY ADJUSTABLE SEAT & COLUMN**

The suspension seat provides all-day comfort for long shifts. The seat and the steering wheel column are easy to adjust so every operator can feel right at home in the cab.



► **ERGONOMIC CONTROLS**

Operate your machine with ease, thanks to the ergonomic design of well-placed levers and switches, while a steering wheel knob helps reduce fatigue.



► **LARGE IN-CAB DISPLAY**

You can see all the important info on the screen of your in-cab display. With this large 5-inch (or optional 7-inch) screen, you can check and control the truck's performance settings on the go with the simple touch of a button.



► **REAR CAMERA DISPLAY**

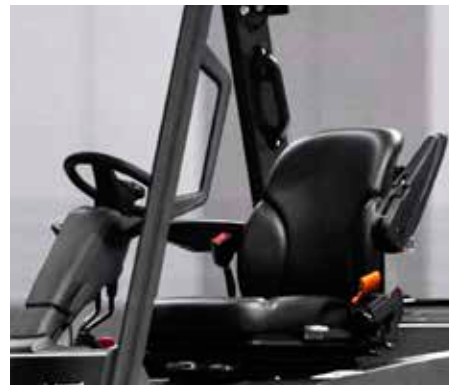
Equip your machine with a rear camera that feeds into the in-cab display when in reverse, ensuring you always have the best view of your workplace without sacrificing comfort.

► **MINIMIZED NOISE**



The use of a new U-joint powertrain and oil-cooled disc brakes helps minimize noise and vibration to 77 dBA at the operator's ears.

► **WELL-PLACED HANDLES**

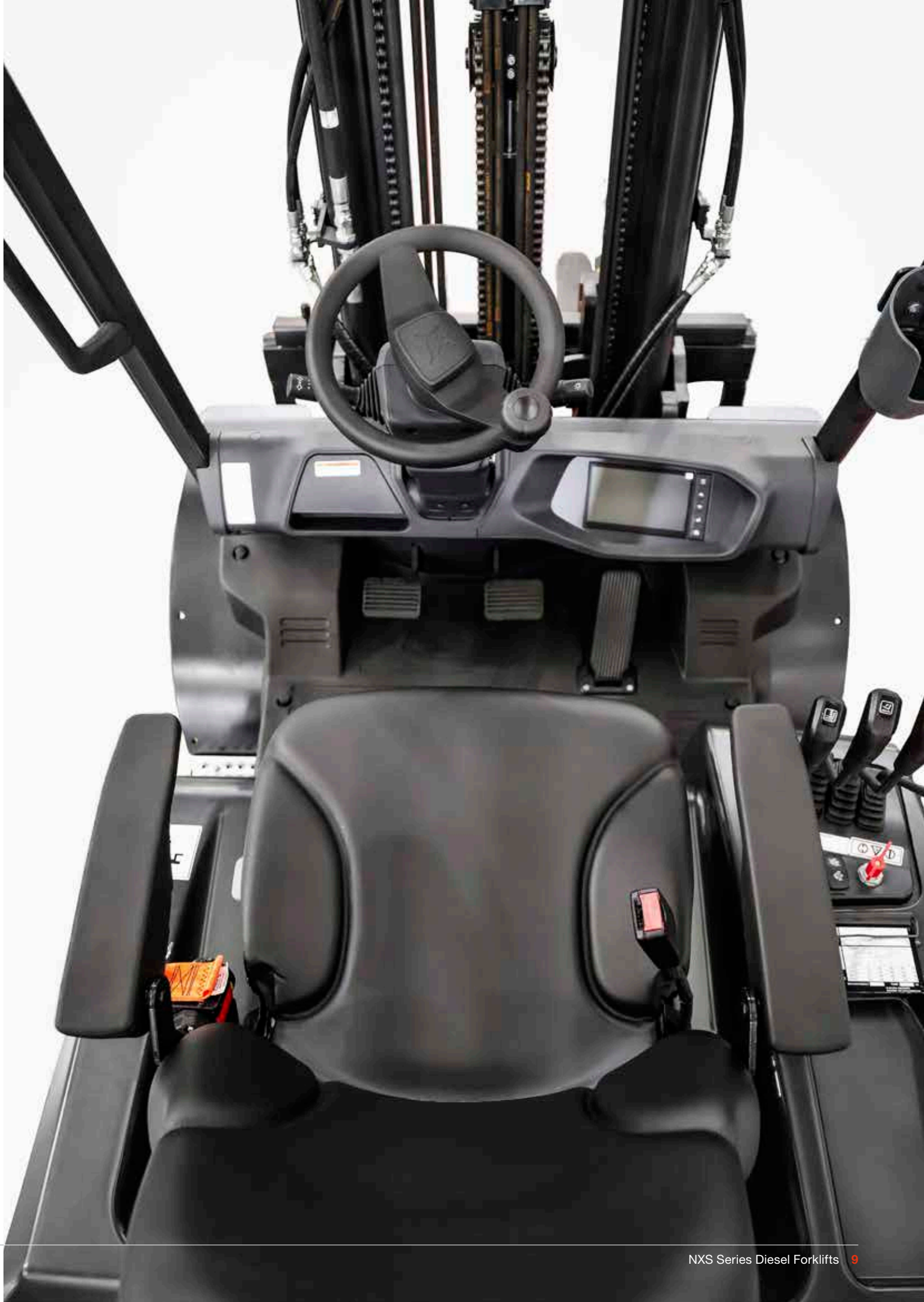


Thanks to the well-placed entry bar and handles, stepping in and out of your vehicle is quick and comfortable.

► **REAR GRAB BAR WITH HORN**



Gives the operator a handy grip for backing up. You can add a horn for an even safer work experience.



SAFETY IN EVERY MOVE

▶ **ADVANCED PROTECTION FOR YOU AND YOUR OPERATION**

Bobcat forklifts have safety embedded in their DNA. Packed with tons of features that protect your health and your investment, these machines give you peace of mind in every task, every day.

▶ **OPERATOR SENSING SYSTEM (OSS)**

The machine's travel and mast lifting functions stop when the operator leaves the seat. The operator must also be seated with a fastened seatbelt to ensure that the forklift won't perform any unintended movements.



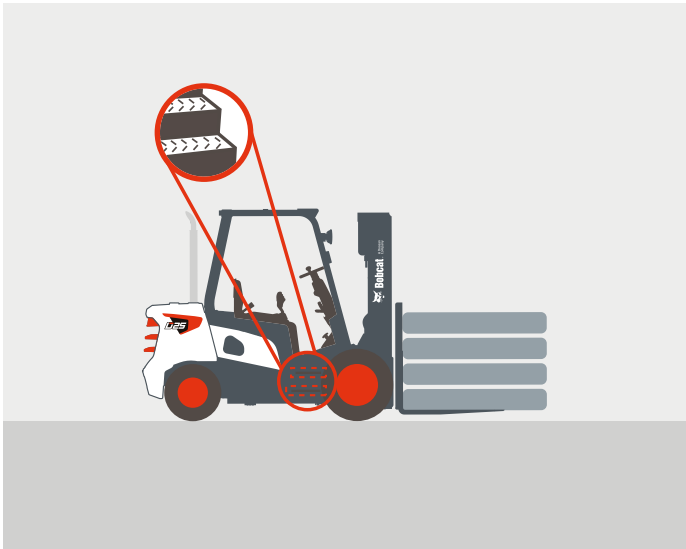
▶ **ELECTRIC PARKING BRAKE (EPB)**

The parking brake engages automatically. This safety feature ensures that the vehicle remains stationary when the operator exits the seat.



▶ **ANTI-SLIP STEP & ENTRY BAR**

The low anti-slip step ensures comfortable and safe mounting and dismounting of the vehicle for extra peace of mind.



▶ **REVERSE LOCK**

Changing directions from forward to reverse is only possible when the machine's speed is less than 3 km/h.



▶ **GROUND SPEED CONTROL**

To further increase safety, you can set a speed limit to keep the forklift from going too fast. The speed limit can be set separately for forward and reverse directions.



▶ **CONCEALED TILT CYLINDERS**

Integrated tilt cylinders on the floor plate enhance safety, eliminating the risk of tipping over.



▶ **LARGE PANORAMIC MIRROR**

The large panoramic mirror provides great visibility onto the rear working area, increasing safety and adding to overall productivity at the same time.



▶ **POWERFUL LED LIGHTS**

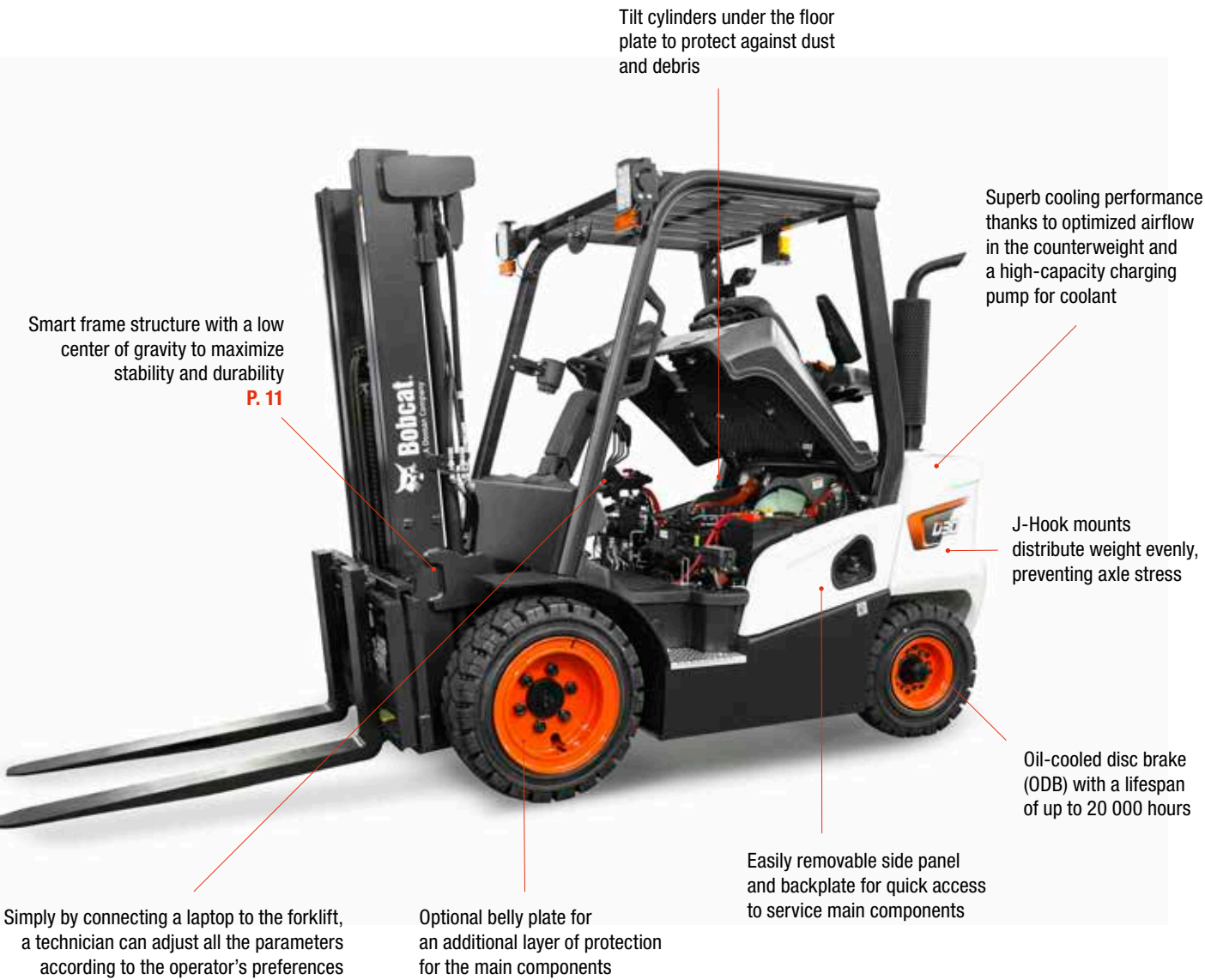
The powerful LED lights illuminate even the darkest places in your workplace for increased safety and productivity.



BUILT TO LAST

► **EXCELLENT RELIABILITY**

Thanks to the powerful diesel engine, oil-cooled disc brakes, and easily accessible components, Bobcat NXS-Series diesel forklifts are built tough to ensure maximum uptime and dependability.



**THERE'S NO TIME
FOR DOWNTIME.
STAND UP TO EVERY TASK
THAT COMES YOUR WAY.
DAY AFTER DAY.**

2 YEAR WARRANTY

► **WARRANTY**

Bobcat develops every machine to the highest standards of quality and durability. That's why our standard warranty provides 24 months or 2 000 operating hours (whichever occurs first) of coverage.



► **PROTECTION PLUS EXTENDED WARRANTY**

Enjoy total peace of mind with Protection Plus extended warranty. Providing the same level of protection as the standard warranty, Protection Plus also reflects different customer needs and expectations by offering a choice of durations and annual operating hours.

► **EXTENSIVE DEALER NETWORK**

You can rely on our network of dealers and service partners who are always ready to help you.

► **BOBCAT GENUINE PARTS**

Quality components delivered to our dealers guarantee that all of our equipment is built to last, withstand the toughest conditions and provide reliable performance.

MAIN SPECIFICATIONS

TECHNICAL DATA ACCORDING TO VDI 2198					
		D25NXS	D30NXS	D33NXS	D35NXS
Load capacity (kg)	Q	2 500	3 000	3 300	3 500
Load center (mm)	c	500			
Load distance: center of driveaxle to fork (mm)	x	480	485		495
Wheelbase (mm)	y	1 700			1 750
Service weight (kg)		4 000	4 510	4 610	4 750
Tires: pneumatic (P), solid (S), cushion (C)		P, S			
Tread, front (mm)	b11	1 060			
Tread, rear (mm)	b12	980			
Tilt of mast / fork carriage forward / backward (°)	α/β	6 / 10			
Height, mast lowered (mm)	h1	2 180			
Free lift (mm)	h2	147	152		
Lift (mm)	h3	3 230			3 000
Height, mast extended (mm)	h4	4 490			4 260
Height of overhead guard (mm)	h6	2 160			
Height of seat (mm)	h7	1 185			
Overall length (mm)	l1	3 730	3 795	3 810	3 875
Length to forkface (mm)	l2	2 680	2 745	2 760	2 825
Overall width (mm)	b1/b2	1 290			
Fork dimensions (mm)	s/e/l	45 × 100 × 1 050	45 × 122 × 1 050	50 × 122 × 1 050	
Fork carriage ISO 2328, class		II	III		
Ground clearance, loaded, below mast (mm)	m1	115	105		
Ground clearance, center of wheelbase (mm)	m2	143			
Aisle width for pallets 1 000 × 1 200 crossways (mm)	Ast	4 070	4 115	4 135	4 195
Aisle width for pallets 800 × 1 200 lengthways (mm)	Ast	4 270	4 315	4 335	4 395
External turning radius (mm)	Wa	2 390	2 430	2 450	2 500
Internal turning radius (mm)	b13	735			750
Travel speed, loaded / unloaded (km/h)		20 / 20			
Lift speed, loaded / unloaded (mm/s)		515 / 560	510 / 560	505 / 560	430 / 480
Lowering speed, loaded / unloaded (mm/s)		510 / 460			
Max. drawbar pull, loaded / unloaded (kg)		2 133 / 2 090	2 024 / 2 057	2 111 / 2 060	2 090 / 2 050
Max. gradeability, loaded / unloaded (%)		33 / 35	29 / 50	27 / 48	26 / 46
Engine manufacturer / type		DM02VA STAGE-5			
Engine power according to DIN ISO1585 (kW)		45.6			
Rated speed (min ⁻¹)		2 200			
Torque at 1/min (N•m)		300 @ 1 200~1 400			
Cycle / number of cylinders / Displacement (-/cm³)		4 / 4 / 2 392			
Fuel consumption according to VDI cycle (l/h)		3.4	3.8	3.9	4

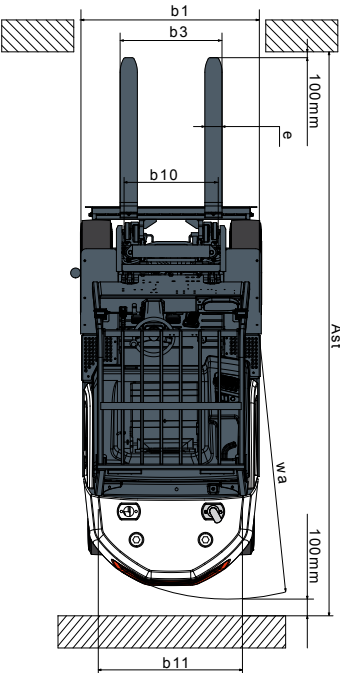
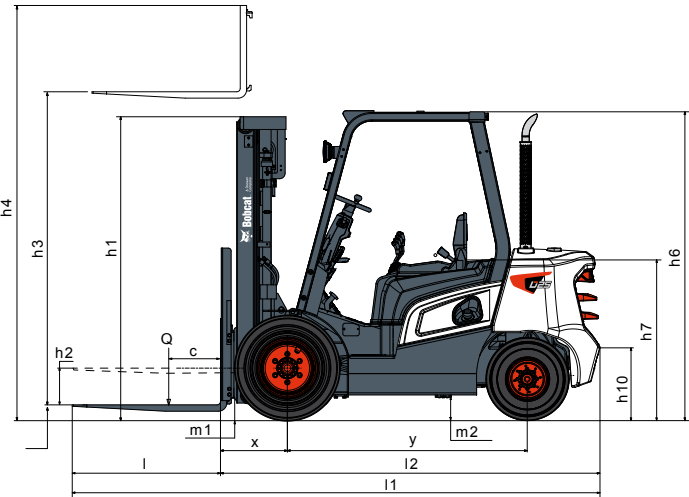
Specification values quoted in this specification sheet have been rounded. Performance may vary depending on operating conditions. Products and specifications are subject to improvement and change without prior notice.
(1) Mast dimensions refer to a range from the lowest to highest available mast with load backrest.

Note: Load capacities with load backrest are based on the standard chassis without side shifter.

STANDARD EQUIPMENT & OPTIONS

STANDARD EQUIPMENT & OPTIONS		STANDARD EQUIPMENT & OPTIONS	
PRODUCTIVITY		ERGONOMICS	
High powered, fuel efficient engine	✓	Ergonomic operator compartment	✓
Powerful gradeability	✓	Spacious leg room	✓
Multi torque mode	✓	Large entry grab bar	✓
Auto tilt leveling	✓	Adjustable steering column	✓
Wide steering angle	✓	Compact steering wheel	✓
Quick disconnect hose couplings (3 or 4 way)	•	USB port & aux power	✓
SAFETY		Document clip	✓
Operating Sensing System (OSS)	✓	Storage area	✓
Mast Lowering Interlock & Tilt Lock (ISO3691)	✓	5" full color display	✓
Electric parking brake	✓	Low noise level	✓
LED front lights and rear combination lights	✓	7" full color display	•
Back-up alarm	✓	Cup holder	•
Panoramic rear-view mirror	✓	Operator fan	•
Reverse lock	✓	Inside exhaust muffler	•
Improved visibility	✓	Rear grab bar with horn	•
Ground speed control	✓	Various (deluxe) suspensions seats	•
Strobe LED light	•	Modular cab – Type A, B, C	•
Rear blue safety LED light	•	Full cab (with air conditioner, additional sound suppression, heater, wipers)	•
Red or blue fence (zone) light	•	SERVICEABILITY	
Additional rear LED lights	•	Integrated type vehicle control unit (VCU)	✓
Fuel cap with key lock	•	Counterweight easy detachable top / rear cover	✓
RELIABILITY		Toolless removable side cover	✓
Mast with IC beam	✓	Wide hood open angle with locking cylinder	✓
Auto shift controller	✓	Easy to access fuse and relay (junction) box	✓
Reverse lock	✓	Easy diagnosis via laptop	✓
Oil-cooled disc brakes	✓	Service notification	✓
Pre-cleaner	•	Inside exhaust muffler	•
Increased fan speed	•	*This list is based on factory data. Standard or optional can vary for specific countries.	
Pre-fuel filter	•		
Under protection (belly plate)	•		

- = option
- ✓ = standard
- = not available



FINANCING OPTIONS

24, 36, OR 48 MONTH FINANCING*

Take advantage of 24, 36 or 48 month financing programs starting from **0% interest** and improve your cashflow.

Ask your dealer for the financing offers available.

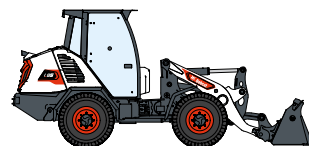
340 MACHINES / **150** ATTACHMENT FAMILIES / **1** TOUGH ANIMAL



**SKID-STEER
LOADERS**



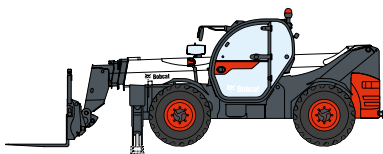
**COMPACT TRACK
LOADERS**



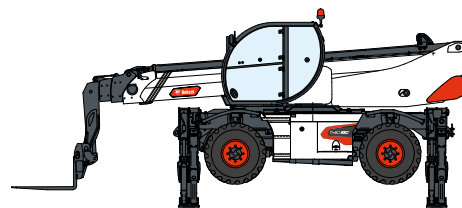
**COMPACT WHEEL
LOADERS**



FORKLIFTS



TELEHANDLERS



ROTARY TELEHANDLERS



**LIGHT COMPACTION
EQUIPMENT**



**COMPACT
EXCAVATORS**



**COMPACT
TRACTORS**



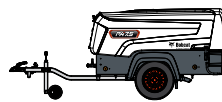
**SMALL ARTICULATED
LOADERS**



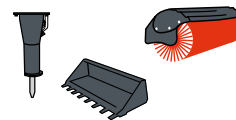
**MINI TRACK
LOADER**



MOWERS



**PORTABLE
POWER**



ATTACHMENTS

DOOSAN

Bobcat is a Doosan Company. Doosan is a global leader in construction equipment, power & water solutions, engines, and engineering proudly serving customers and communities for more than a century. | Bobcat and the Bobcat logo are registered trademarks of Bobcat Company in the United States and various other countries. ©2024 Bobcat Company. All Rights Reserved.

www.bobcat.com

©2024 BOBCAT B4502700-EN (02-24)



Bobcat®

*Financing options may vary by country and dealer. Always ask your dealer about currently available financing options. Terms and conditions may apply.

Doosan Bobcat EMEA, U Kodelky 1810, 263 12 Dobříš, Czech Republic